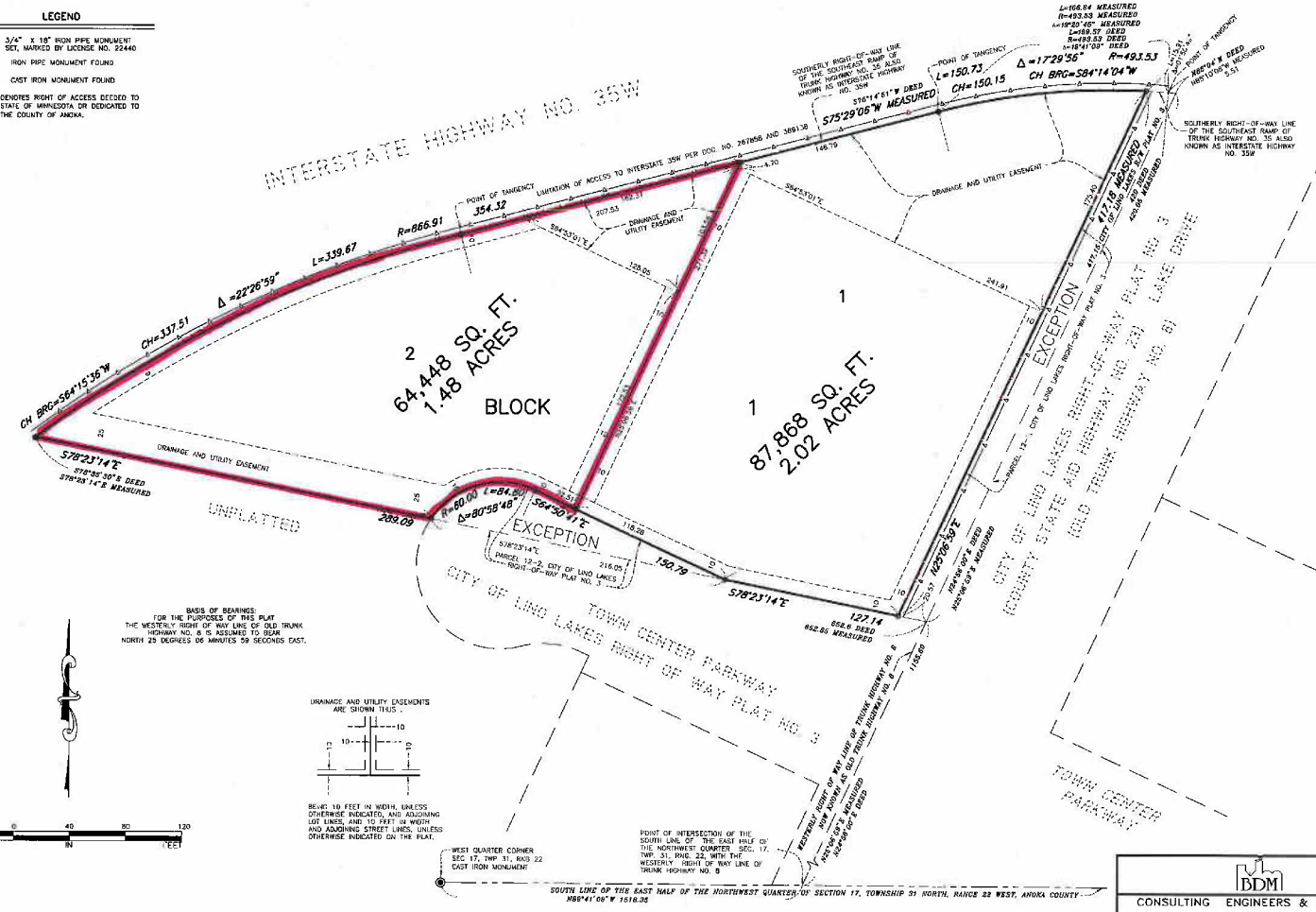


HOLIDAY STORES LINO LAKES FIRST ADDITION AREA EXHIBIT

CITY OF LINO LAKES
ANOKA COUNTY, MINNESOTA
SEC. 17, TWP. 31, RGE. 22

- LEGEND**
- 3/4" X 18" IRON PIPE MONUMENT SET, MARKED BY LICENSE NO. 22440
 - IRON PIPE MONUMENT FOUND
 - CAST IRON MONUMENT FOUND
 - DENOTES RIGHT OF ACCESS DECIDED TO STATE OF MINNESOTA OR DEDICATED TO THE COUNTY OF ANOKA.



BDM

CONSULTING ENGINEERS & SURVEYORS

SOUTH OFFICE:
80 PLATO BOULEVARD EAST, SUITE 140, ST. PAUL, MN (612) 549-3140

NORTH OFFICE:
200 8TH STREET, ELK RIVER, MN (651) 334-8432